

## 5. PROPOSALS MAPS

5.1 Proposals maps based on the six Housing Market Areas have been prepared.

The maps show the following pieces of information:

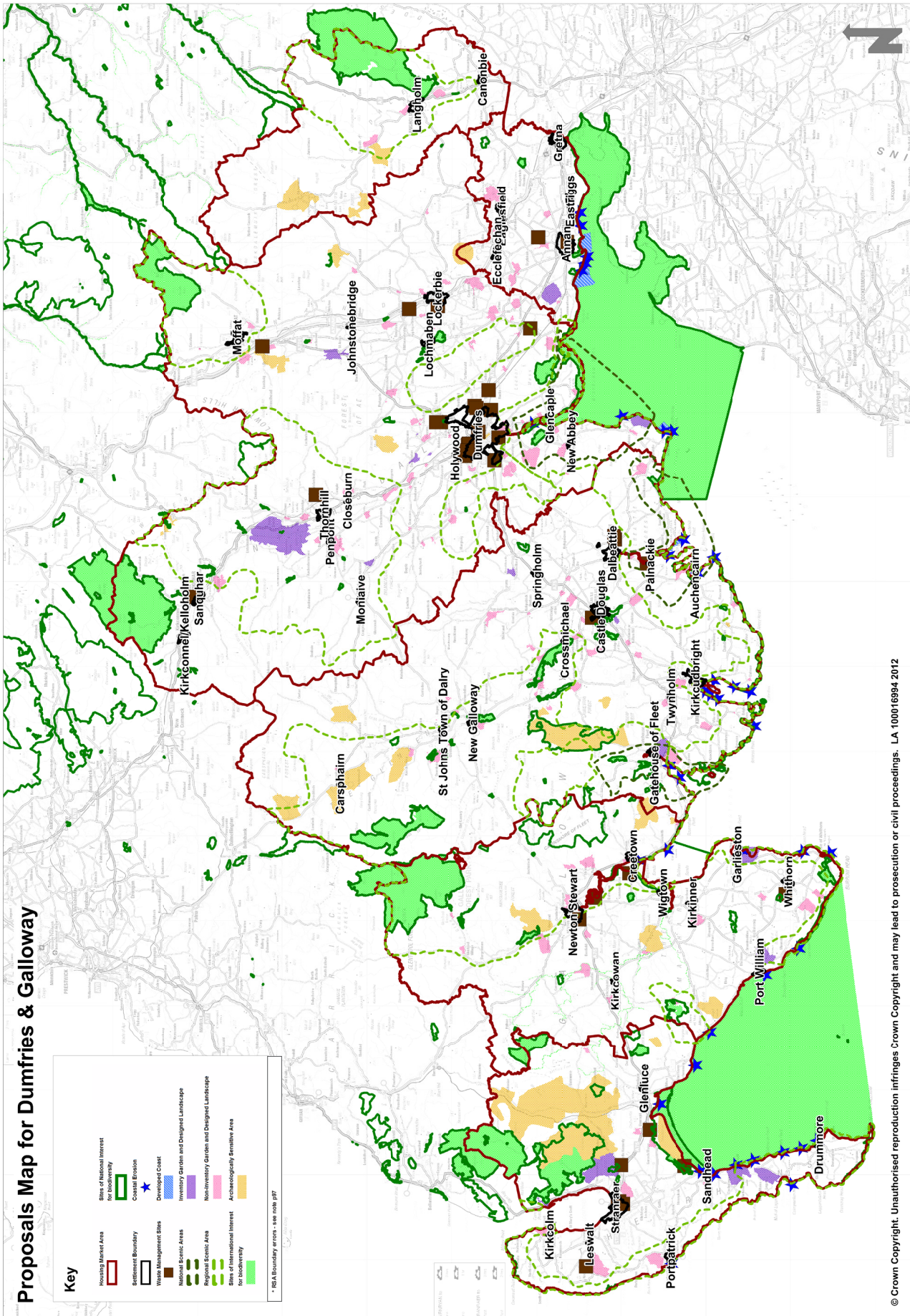
- Settlements
- Waste Management Sites
- National Scenic Areas
- Regional Scenic Areas\*
- Sites of International Interest for Biodiversity and Geodiversity (SSSIs)
- Sites of National Interest for Biodiversity
- Coastal Zone – Developed Coast, Coastal Erosion
- Historic Gardens and Designed Landscapes – Inventory and Non-Inventory Gardens
- Archaeologically Sensitive Areas

\* **The Regional Scenic Area boundaries as shown on the proposals maps contain a drafting error, please see the Regional Scenic Areas Technical Paper with errata pages for an explanation and maps showing the correct boundaries. (March 2015)**

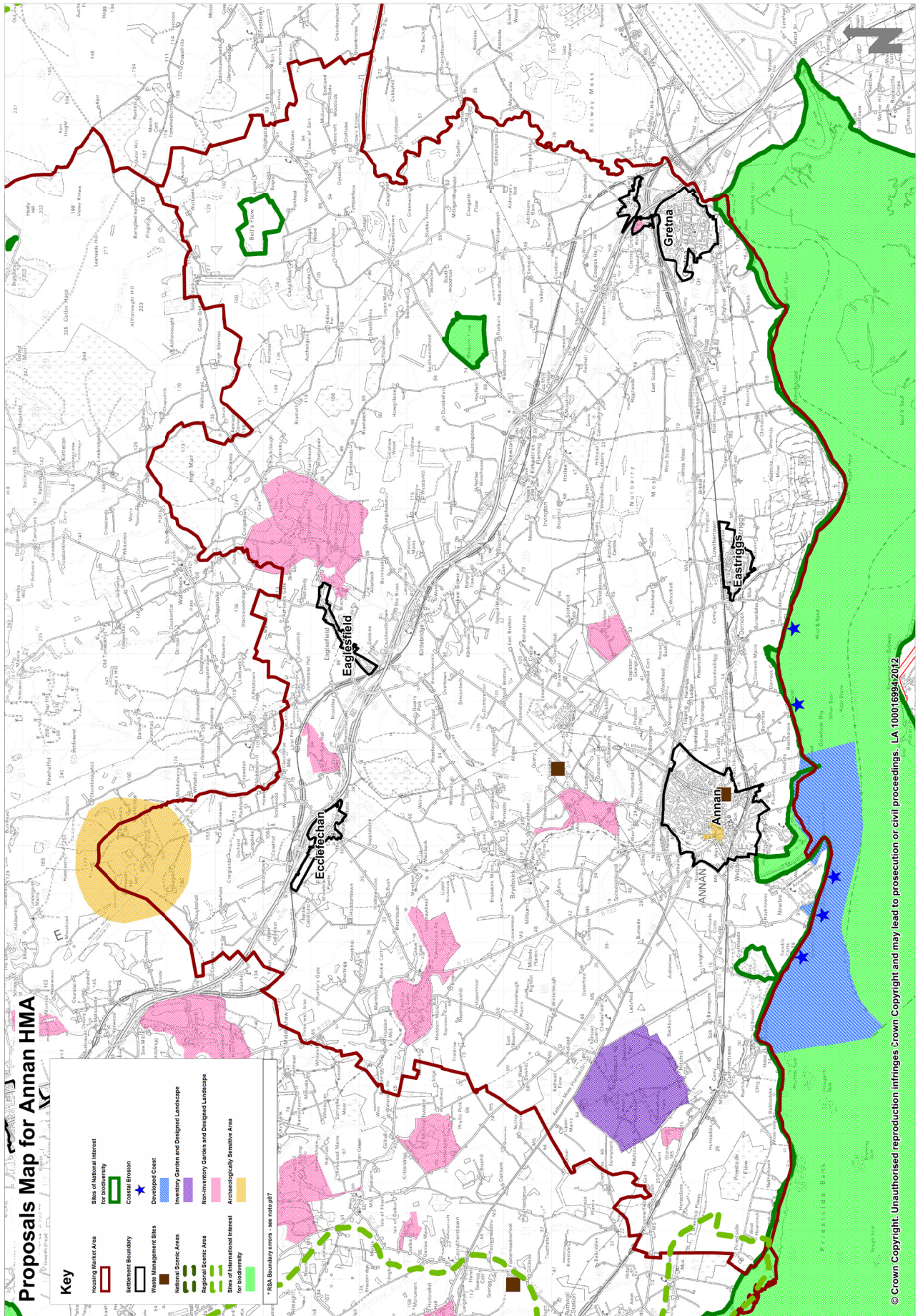


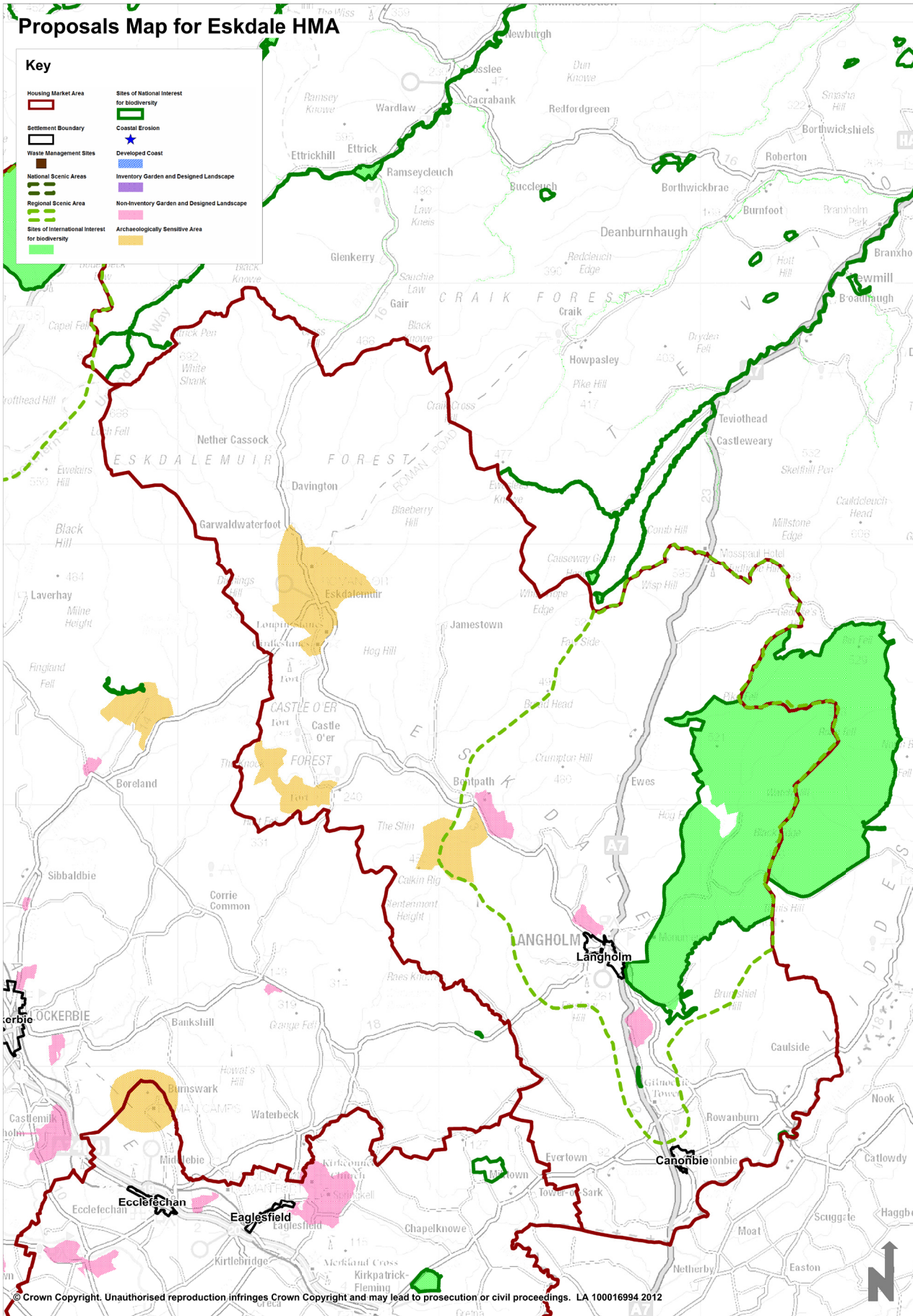


Proposals Map for Dumfries & Galloway

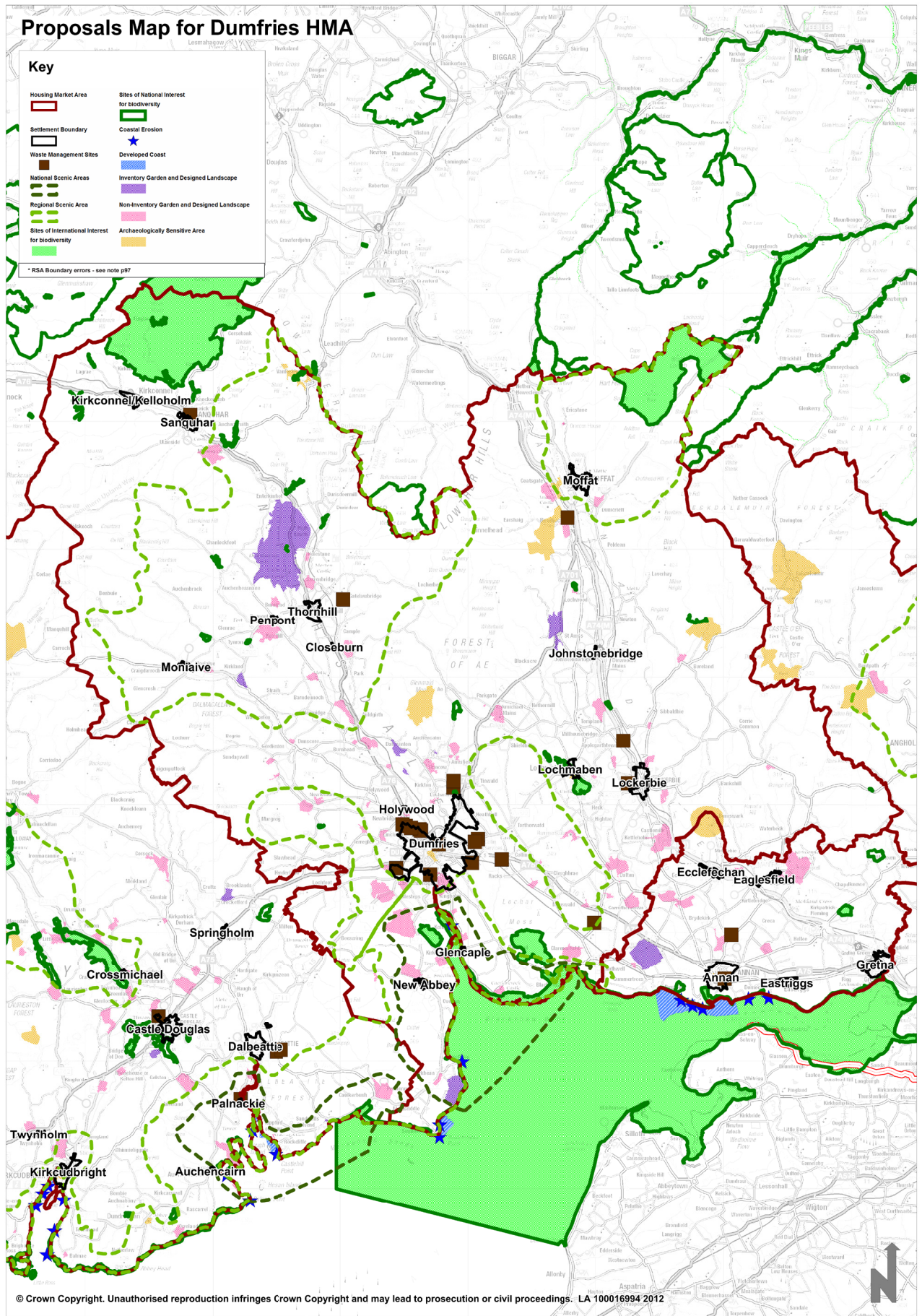


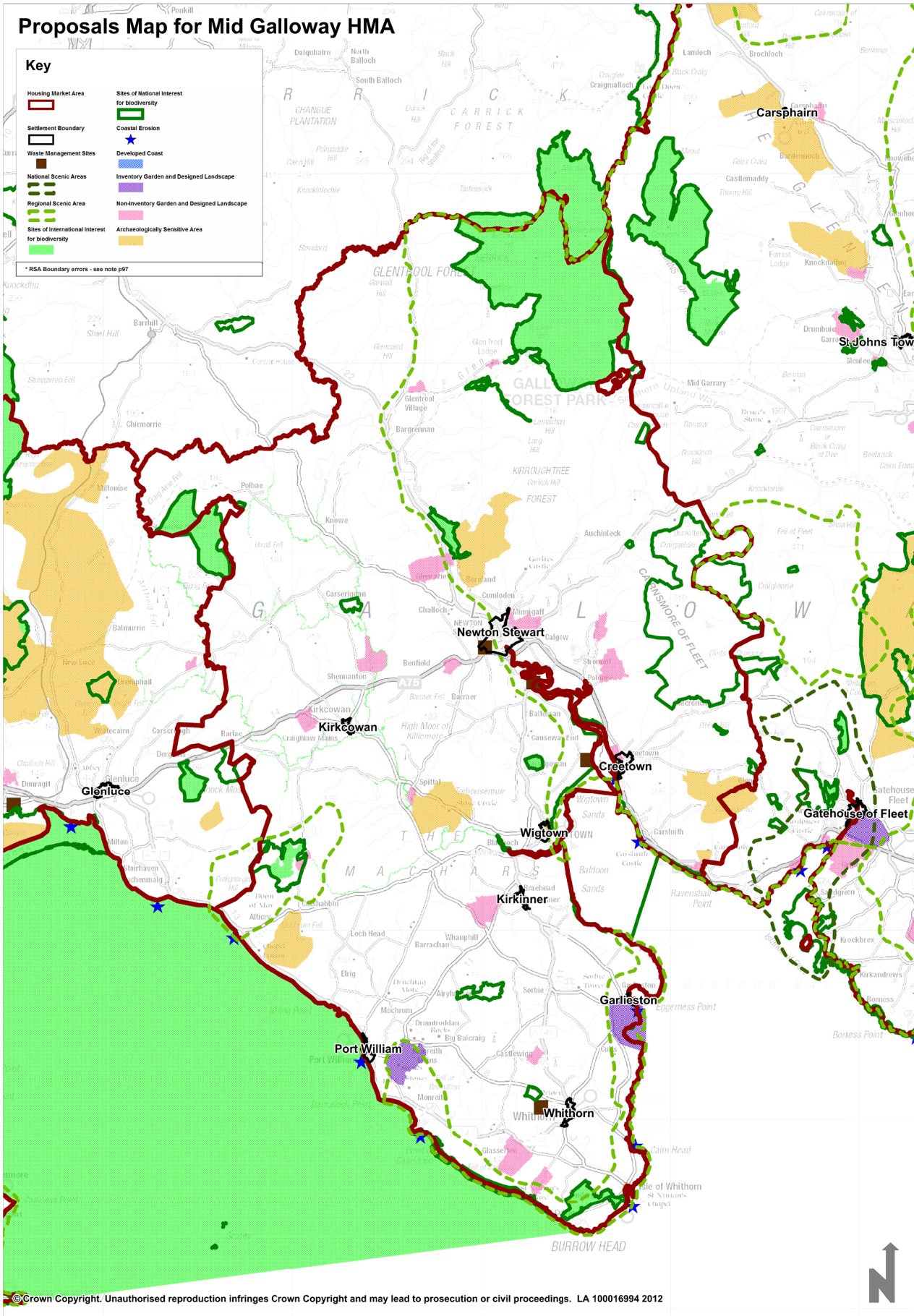
© Crown Copyright. Unauthorised reproduction infringes Crown Copyright and may lead to prosecution or civil proceedings. LA 100016994.2012





© Crown Copyright. Unauthorised reproduction infringes Crown Copyright and may lead to prosecution or civil proceedings. LA 100016994 2012









### Proposals Map for Stranraer HMA

**Key**

Housing Market Area	Sites of National Interest for biodiversity
Settlement Boundary	Coastal Erosion
Waste Management Sites	Developed Coast
National Scenic Areas	Inventory Garden and Designed Landscape
Regional Scenic Area	Non-Inventory Garden and Designed Landscape
Sites of International Interest for biodiversity	Archaeologically Sensitive Area

STRANRAER to Belfast 3 hrs  
 Belfast 2 hrs

