



**Dumfries and Galloway Council
Skills, Education and Learning Directorate**

Public Consultation Document

**Proposal to change the catchment area for pupils
living in the Burnhead area from Holywood Primary
School to Dunscore Primary School.**

This proposal has been issued by Dumfries and Galloway Council Education and Learning Directorate in accordance with the Schools (Consultation) (Scotland) Act 2010 as amended and Children and Young People (Scotland) Act 2014.

Statutory Consultation Period: Monday 5th September to Friday 4th November 2022.

Dumfries and Galloway Council is proposing, subject to the outcome of the statutory consultation process, to change the catchment area of Dunscore Primary School, Holywood Primary School, Wallace Hall Academy and North West Community Campus.

The proposed changes, if approved, will take place as of August 2023.

HMIe (Her Majesty's Inspectorate of Education) is referred throughout the document in line with the Schools (Consultation) (Scotland) Act (1980). HMIe was amalgamated into Education Scotland which was created on the 1 July 2011 as the lead public body for assessment and education improvement in Scotland.

Publication Information

The proposal paper will be available, free of charge, at:

- Council Headquarters, Dumfries, DG1 2DD.
- Wallace Hall Academy, Thornhill, DG3 5DS.
- North West Community Campus, Dumfries, DG2 9LU.
- Dunscore Primary School, Dunscore, DG2 0SY.
- Holywood Primary School, Holywood, DG2 0RF.
- Auldgirth Village Hall, Auldgirth, DG2 0XG.

And published on the Dumfries and Galloway Council website:

www.dumgal.gov.uk/consultations

Copies of this paper are also available on request from:

Statutory Consultation – Wallace Hall
Dumfries and Galloway Council
Militia House
109/111 English Street
DG1 2HR

E-mail: statutoryconsultation@dumgal.gov.uk

To request this information in a more accessible format or alternative language, please contact the postal or email address listed above.

Formal notice of the proposal and relevant information will be made available, free of charge, to the consultees listed as follows:

- a) Parents and carers of pupils within the current Dunscore Primary School catchment including children expected to attend primary school within two years of the date of publication.
- b) Parents and carers of pupils within the current Holywood Primary School catchment including children expected to attend primary school within two years of the date of publication.
- c) Parents and carers of pupils at Wallace Hall Academy.
- d) Parents and carers of pupils at North West Community Campus (secondary).
- e) Staff and Parent Councils of Holywood Primary School.
- f) Staff and Parent Councils of Dunscore Primary School.
- g) Staff and Parent Councils of Wallace Hall Academy.
- h) Staff and Parent Councils of North West Community Campus (secondary).
- i) Trade union representatives.
- j) Auldgirth and District Community Council.
- k) HMIE.
- l) The pupils of any affected school.

Contents

1. Relevant Proposals and Consultees	4
2. Correction of the Paper	4
3. Consultation Period	4
4. Public Meeting.....	5
5. Involvement of HMle	6
6. Consultation Report.....	6
7. Time for Further Consideration	7
8. Explanation of Approach	7
9. Proposal Paper	8
10. Educational Benefits Statement	14
11. Recommendation	15
Appendix 1 - Current Catchment Area of Wallace Hall Academy.....	16
Appendix 2 - Current Primary Catchment Boundaries.....	17
Appendix 3 – Proximity of Schools & Transport Routes	18
Appendix 4 – Proposed New Primary and Secondary Catchment Boundaries	20
Appendix 5 - Proposed Dates for Implementation.....	22

1. Relevant Proposals and Consultees

Dumfries and Galloway Council is proposing, subject to the outcome of the statutory consultation process, to realign the catchment of Dunscore Primary School to include the area of Burnhead.

Formal notice of the proposal and relevant information will be made available, free of charge, to the consultees listed as follows:

- a) Parents and carers of pupils within the current Dunscore Primary School catchment including children expected to attend primary school within two years of the date of publication.
- b) Parents and carers of pupils within the current Holywood Primary School catchment including children expected to attend primary school within two years of the date of publication.
- c) Parents and carers of pupils at Wallace Hall Academy.
- d) Parents and carers of pupils at North West Community Campus (secondary).
- e) Staff and Parent Councils of Holywood Primary School.
- f) Staff and Parent Councils of Dunscore Primary School.
- g) Staff and Parent Councils of Wallace Hall Academy.
- h) Staff and Parent Councils of North West Community Campus (secondary).
- i) Trade union representatives.
- j) Auldgirth and District Community Council.
- k) HMle.
- l) The pupils of any of the affected schools.

2. Correction of the Paper

If any inaccuracy or omission is discovered in this proposal paper, either by Dumfries and Galloway Council or any other person, Dumfries and Galloway Council will determine if relevant information has been omitted or if the paper contains an inaccuracy. Dumfries and Galloway Council will then take appropriate action, which may include the issue of a correction or the reissuing of the proposal or the revision of the timescale for the consultation period, if appropriate. In that event, relevant consultees and HMle will be advised.

3. Consultation Period

A period of statutory consultation commences on Monday the 5th of September 2022 and ends on Friday the 4th of November, 2022 (note that both of these dates are inclusive). This period allows for the statutory minimum of six weeks, including at least thirty school days.

Schools across Dumfries and Galloway will be closed on Monday 19th September 2022 as an additional bank holiday to mark HM Queen Elizabeth II's funeral and the last day of the period of National Mourning. The consultation period and has been amended to ensure that the consultation period extends to thirty school days as detailed in the Schools (Consultation) (Scotland) Act 2010 as amended.

3.1 Responses to the Proposals

Any written representations should be sent to the following postal address:

Statutory Consultation – Wallace Hall Academy
Dumfries and Galloway Council
Militia House
109/111 English Street
DG1 2HR

Or by email to:

statutoryconsultation@dumgal.gov.uk

When responding you are invited to state your relationship with the school – for example, “pupil”, “parent”, “carer”, “relative”, “former pupil”, “teacher in school” or “member of the community”. However, it is not compulsory to do so.

Those sending in a response, whether by letter or electronically, should know that their response will be open to public scrutiny and may have to be supplied to anyone making a reasonable request to see it. If they do not wish their response to be made publicly available, they should clearly write on the document: “I wish my response to be considered as confidential with access restricted to Councillors and Council Officers of Dumfries and Galloway Council”. Otherwise, it will be assumed that the person making the response agrees to it being made publicly available.

All written responses must be received by the last day of the consultation period, Friday 4th November at 5 pm.

4. Public Meeting

A public meeting will be held to discuss this proposal, the details of which is set out below:

- 27th of September 2022, 6.00-8.00PM, Auldirth Village Hall, DG2 0XG.

Anyone wishing to attend the public meeting is invited to do so. The meeting will be convened by the Council, will be chaired by a senior Education Officer and will be addressed by officers of the Education and Learning Directorate. A short introduction to the session will start at 6PM with members of the public free to drop into the session until 8PM.

The meeting will be an opportunity for the public to hear more about the proposal; to ask questions about the proposal; and to have the views of all stakeholders recorded so that they can be taken into account. A note will be taken at the meeting of questions asked and views expressed. This note will be published on the Council website.

The note will be forwarded to HMLe, along with other submissions and comments received by the Council during the consultation process.

4.1 Advertisement in Local Media

A notice announcing the public meetings will be placed in the Dumfries and Galloway Standard and on the Dumfries and Galloway Council website.

4.2 Meetings with Pupils and Staff

School staff may arrange to discuss proposals with pupils (who are considered to be of a suitable age and maturity) in the affected schools. A record of questions, responses and views will be taken, and this will be published in the Consultation Report.

5. Involvement of HMIE

When the proposal document is published, a copy will also be sent to HMIE by Dumfries and Galloway Council. HMIE will also be sent, by Monday 7th November 2022, a copy of any relevant written representations that are received by the Council from any person during the consultation period, as well as the summary note of the public meeting that will be held. So far as is practicable a copy of any other relevant documentation will also be sent to HMIE, by Monday 21st November 2022. HMIE will then prepare a report on the educational aspects of the proposal, to be completed no later than 3 weeks after they receive the consultation papers (Friday 9th December 2022). In preparing their report, HMIE may visit the school and make such enquiries of persons there as they consider appropriate. HMIE may also make reasonable enquiries to such other persons they consider it appropriate.

6. Consultation Report

Dumfries and Galloway Council will review the proposal having regard to the HMIE report, written representations that it has received, and oral representations made at the public meeting. It will then prepare a Consultation Report. This report will be published in electronic and printed formats (anyone who submitted a written representation during consultation will be contacted) and will be available, free of charge at the following addresses:

- Council Headquarters, Dumfries, DG1 2DD.
- Wallace Hall Academy, Thornhill, DG3 5DS.
- North West Community Campus, Dumfries, DG2 9LU.
- Dunscore Primary School, Dunscore, DG2 0SY.
- Holywood Primary School, Holywood, DG2 0RF.
- Auldgirth Village Hall, Auldgirth, DG2 0XG.
- The Dumfries and Galloway Council website.

The Consultation Report will include a summary of the written and oral representations made during consultation and a copy of the HMIE report, together with the Council's considered response to the issues raised. The report will include details of any alleged inaccurate and/or omissions and how these have been handled. The Consultation Report will be published at least 3 weeks prior to being submitted to the Education and Learning Committee.

7. Time for Further Consideration

At this present time Dumfries and Galloway Council intends to publish its report on Thursday 5th January 2023. In publishing the report the Council will invite any person or party to make further representations to the Education and Learning Committee prior to its meeting within a 3 week window; Monday 9th January to Friday 27th January 2023. A notice to this effect will also be published on the Dumfries and Galloway Council website.

The final Consultation Report will be submitted to the Education and Learning Committee in early 2023. However, this timescale may change depending on the nature of issues raised during consultation, and the need to give full consideration to those issues. In the latter event, the report may not be submitted until a later Committee meeting.

8. Explanation of Approach

The proposal is advanced within the context of all applicable legislation. Amongst other duties, education authorities are required to secure adequate and efficient provision of school education (S.1 of the Education Act 1980); and to endeavour to secure improvement in the quality of school education in schools that are managed by them (S.3 of The Standards in Scotland's Schools Act 2000).

9. Proposal Paper

9.1 Rationale

The consultation process for this proposal first started on the 12th of November 2019, but the process was interrupted by COVID-19 lockdowns and could not be completed. This proposal is an update to the original paper with updated data to reflect any changes that may have taken place over the last three years.

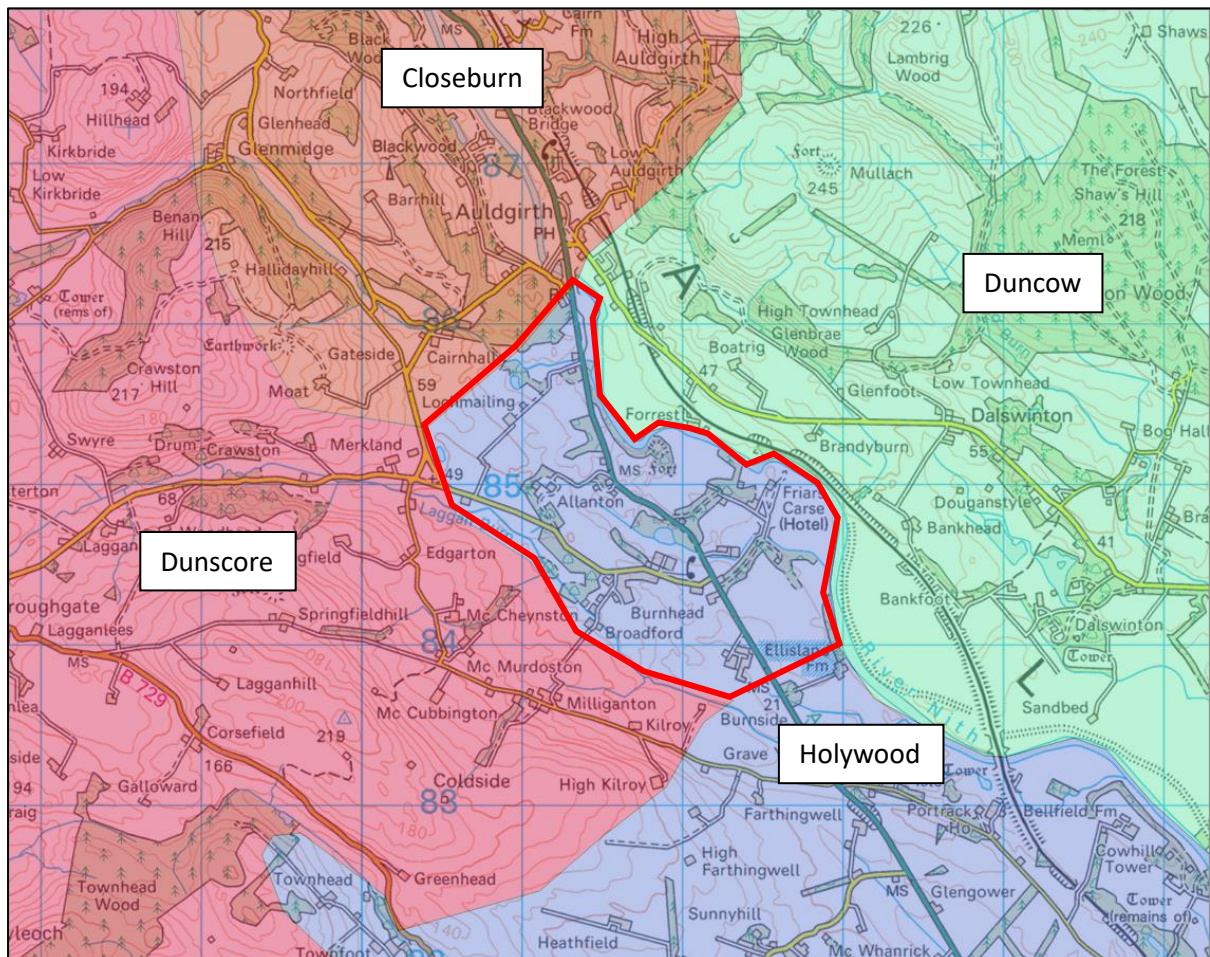
Members of the Auldgirth and District Community Council made representation to the Education and Learning Directorate in March 2019 with the request to review the catchment boundary for Wallace Hall Academy and its associated Primary Schools. The Community Council met with the Acting Director in June 2019 where they discussed their view of the historical anomaly for the Burnhead community who, they felt, should be within the catchment area for Wallace Hall Academy.

It was the request of the Auldgirth and District Community Council at the time that the boundary for the catchment area for Wallace Hall Academy would be altered to allow those children from the Burnhead community to attend Wallace Hall Academy as their secondary school. The Community Council had representation from families who had already chosen to send their children to Wallace Hall Academy, accepting that this was out of the current catchment provision and that they were responsible for school transport. The map of the current catchment of Wallace Hall Academy is included in Appendix 1.

The Burnhead community currently falls under the catchment for Holywood Primary School, which is associated with the North West Community Campus in Dumfries. The Council is not seeking to change this association between the two schools but does seek to address the concerns of the Burnhead community. To implement this change, the Council would need to amend the adjacent primary school catchment boundaries to include the Burnhead community within the catchment of one of the primary schools that are currently associated with Wallace Hall Academy and not Holywood Primary. The current primary catchment boundaries are shown in Appendix 2.

9.2 Existing Provision

The current catchment area for primary aged children from the Burnhead area (denoted with a red outline) is Holywood Primary School and can be seen in the diagram below:



Map of the Burnhead area in relation to its local primary schools.

Holywood Primary School is associated with the North West Community Campus in Dumfries. The Council does not seek to end this association between these two schools.

The primary schools that are associated with Wallace Hall Academy and have catchment areas that border the Burnhead area are Closeburn Primary School, Duncow Primary School and Dunscore Primary School. These are also shown on the diagram above.

To ensure the secondary catchment for pupils within the Burnhead area is Wallace Hall Academy, the Council will need to amend the primary school catchment

boundaries to include the Burnhead community within the catchment of one of these three primary schools.

9.3 Proposed Change in Education Provision

The Council seeks to carry out an adjustment to the school catchment for the Burnhead area based on the factors below:

- Proximity of schools & transport routes (see Appendix 3)
 - Dunscore Primary School is the closest primary school for the majority of pupils who live in the Burnhead area. On average, it is 0.4 miles closer for Burnhead pupils than Hollywood and closer still than Duncow and Closeburn.
- Condition of schools
 - Due to recent refurbishment at Dunscore Primary School, all three primary schools under consideration are of equal condition and quality.
- Rolls and capacities within neighbouring schools
 - Dunscore, Closeburn and Duncow all have the capacity to accept the pupils from the Burnhead area.
 - Wallace Hall Academy has the capacity to accept the pupils from the Burnhead area.
- Suitability of schools
 - The most recent evaluations against this measure indicates that all primaries are equally suitable for learning and teaching.

Based on the factors above and the proposal and appendices below, we wish to consult stakeholders on the proposal to realign the catchment area to include the Burnhead area within the catchment for Dunscore Primary School, as shown in Appendix 4. This would also put pupils of the Burnhead area in the catchment of Wallace Hall Academy.

If the proposal is implemented, any primary school children and their siblings would remain within their current chosen school for the duration of their primary schooling, if they so desired and would not be asked to move.

9.4 Pupil Distribution

The current distribution of primary aged pupils that reside within the Burnhead area is as follows:

Pupil Identifier	Stage	Catchment School	Attending School
1	Primary	Hollywood Primary	Dunscore School
2	Primary	Hollywood Primary	North West Community Campus
3	Primary	Hollywood Primary	Wallace Hall Primary School
4	Primary	Hollywood Primary	Dunscore School
5	Primary	Hollywood Primary	Duncow School

This information shows that all current primary aged pupils are currently choosing to attend a variety of primary schools, none of which is their actual catchment school.

The current distribution of secondary aged pupils that reside within the Burnhead area is as follows:

Pupil Identifier	Stage	Catchment School	Attending School
6	Secondary	North West Community Campus	Wallace Hall Academy
7	Secondary	North West Community Campus	Wallace Hall Academy
8	Secondary	North West Community Campus	Wallace Hall Academy
9	Secondary	North West Community Campus	St Joseph's College
10	Secondary	North West Community Campus	Wallace Hall Academy
11	Secondary	North West Community Campus	Wallace Hall Academy
12	Secondary	North West Community Campus	Wallace Hall Academy
13	Secondary	North West Community Campus	Wallace Hall Academy

This information shows that the overwhelming majority of secondary aged pupils are currently choosing to attend Wallace Hall Academy, despite this not being their catchment school. One secondary aged pupil instead attends St Joseph's College and had previously attended St Andrew's Primary School.

9.5 Impact on Schools

The following table shows the current roll and maximum capacity of each primary school as well as Wallace Hall Academy:

School	Current Roll (Census 2021)	Capacity (2022)
Closeburn Primary	51	208
Duncow Primary	39	74
Dunscore Primary	47	100
Hollywood Primary	59	75
Wallace Hall Academy	540	864

This shows that there is capacity at Dunscore Primary to accept a higher number of primary aged pupils and that Wallace Hall Academy has the capacity to accept a higher number of secondary pupils.

If all primary aged pupils from the Barnhead area were to attend Dunscore Primary in August 2023 in the event that this proposal was successful, the effect on the following schools will be as follows:

Primary School	Change in Roll
Closeburn Primary	No change
Duncow Primary	- 1 pupil
Dunscore Primary	+3 pupils
Hollywood Primary	No change
Wallace Hall Primary	-1 pupil
North West Community Campus (primary)	-1 pupil

This shows that there would be minimal impact to the considered schools and also that Dunscore has the capacity to accept an additional 3 pupils if they chose to attend.

9.6 Condition of Schools

The schools are given condition ratings for each building within the school site and by the various physical elements that make up each building. Evaluation of this information is carried out to determine the priorities for investment.

The following table shows the condition of the primary schools in consideration:

Name	Overall Condition
Closeburn (survey date 08/06/20)	B
Duncow (survey date 15/05/20)	B
Dunscore (survey date 11/06/20)	B

The overall condition of Dunscore is the same as the other primary schools under consideration. Additionally, since the most recent survey that was taken at Dunscore, they have had further improvements made to their pupil toilet facilities.

9.7 Suitability of Schools

Suitability is a measure of whether a school is fit for the purpose of delivering the education curriculum.

That is whether its design and layout enhance its function and use, whether there is space and scope to accommodate all the pre-school, day school and after-school demands and services, whether it is 'inclusive' and accessible to those with disabilities, how capable it is of adjustment or adaptation, how able to 'flex' in response to future, sometimes unforeseen changes in the scale and nature of demand and usage, to changes in climate and to changes in ICT and other technology and the ways in which education may be delivered.

The following table shows the Suitability Rating for the primary schools in consideration:

School	Suitability rating
Closeburn Primary (survey date 25/01/22)	B
Duncow Primary (survey date 08/03/22)	B
Dunscore Primary (survey date 08/03/22)	B

The most recent evaluations against this measure indicates that all primaries are equally suitable for learning and teaching.

9.8 Impact on Transport

Secondary aged pupils would be transported to Wallace Hall Academy on existing service bus routes and can do so for free using the Young Persons' (Under 22s) Free Bus Travel service. This existing service can accommodate the small pupil numbers under discussion and is currently doing so.

Currently, eligible Burnhead primary-aged pupils are entitled to free travel to Hollywood Primary School. This entitlement would be changed to travel to Dunscore Primary School for eligible children. If all eligible pupils were to take this entitlement, transport costs would be equivocal to transport costs to Hollywood Primary (see Appendix 2).

9.9 Impact on the Community

The request to carry out this catchment review has originated from the Burnhead residents via the Community Council; therefore, this proposal is understood to reflect their requirements.

9.10 Financial Impact

There would be minimal financial impact as a result of this proposal, as illustrated in the factors discussed above, so should give no concern to the Council and the school's stakeholders.

9.11 Impact on Future Pupils and Provision

A change in catchment area for the pupils of Burnhead to include them with the current catchment for Dunscore Primary would mean that current and future pupils will have the entitlement to be placed at Wallace Hall Academy for their secondary education.

10. Educational Benefits Statement

10.1 Impact on Pupils

All children and young people have an entitlement to a curriculum which is coherent with smooth and well-paced progression through the experiences and outcomes, particularly across transitions, from early learning and childcare to primary, from primary to secondary school, and beyond school. The proposal made in this consultative document aligns with this entitlement.

This proposal would enhance 3 to 18 working and ensure the delivery of the entitlement to a coherent curriculum with progression and continuity of learning for children from the Burnhead community if they intend to attend Wallace Hall Academy.

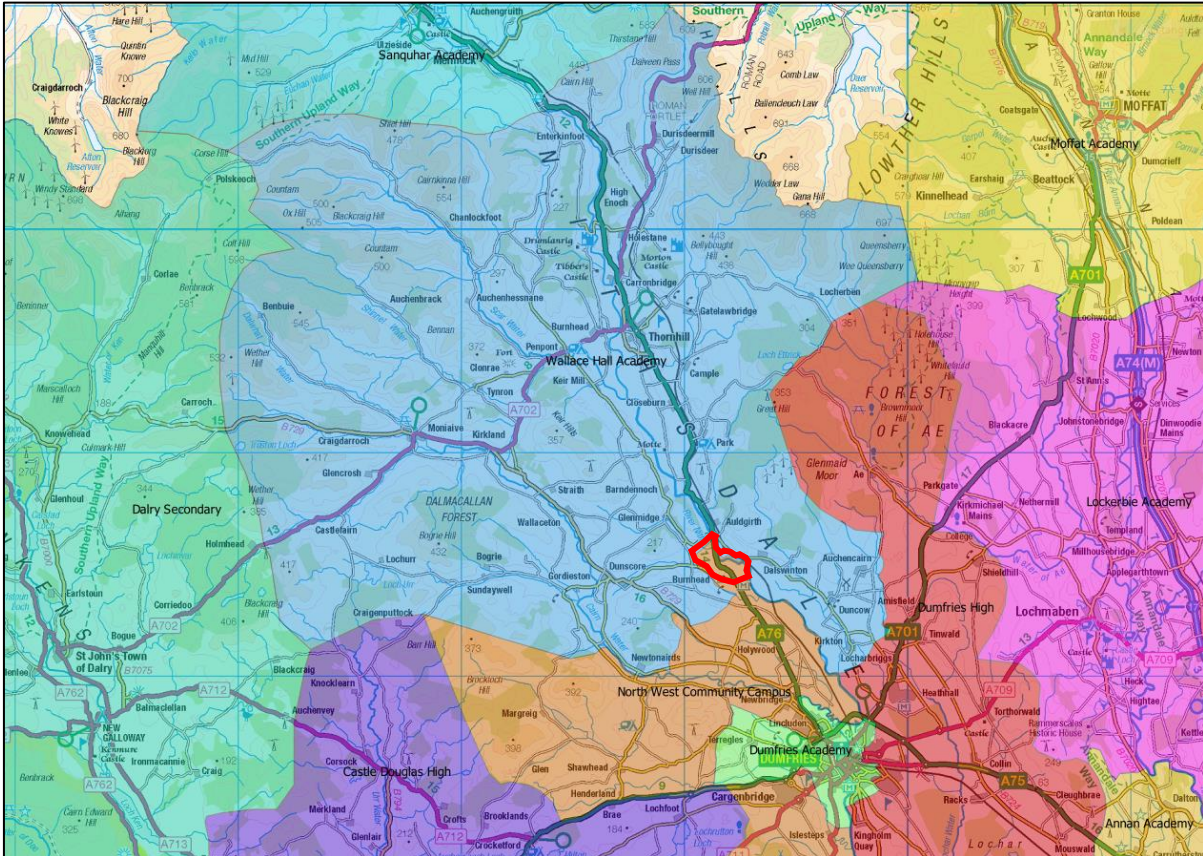
11. Recommendation

This proposal seeks to realign the catchment of Dunscore Primary School to include the area of Burnhead, as shown on the map within Appendix 4.

The proposed changes, if approved, will be implemented for the start of the academic year in August 2023.

Appendix 1 - Current Catchment Area of Wallace Hall Academy

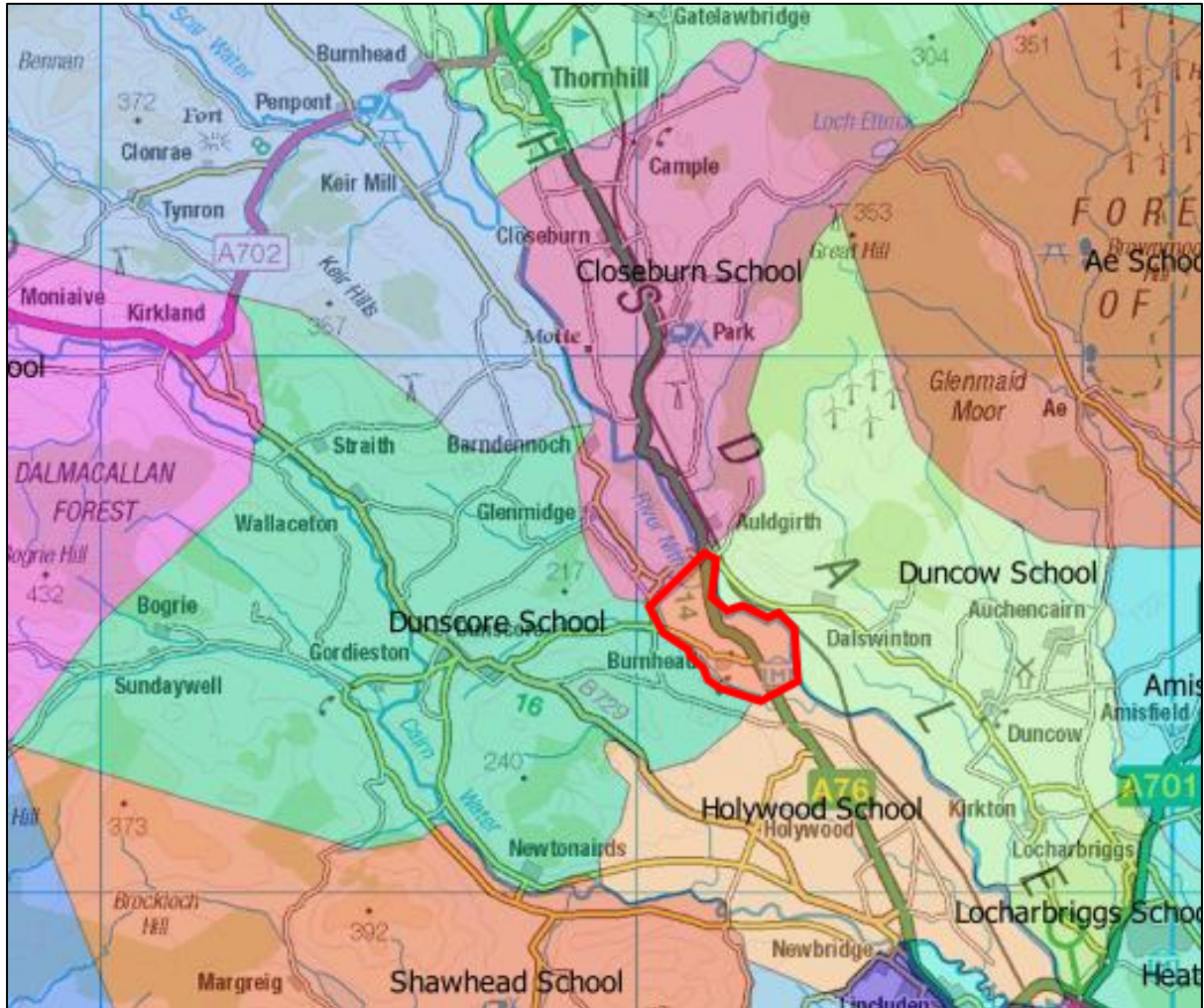
The map below shows the current catchment for Wallace Hall Academy (the large central area in blue):



The Burnhead area (highlighted in red) in relation to the surrounding Secondary School Catchment Areas

Appendix 2 - Current Primary Catchment Boundaries

The map below shows the current catchments for the primary schools that surround the Burnhead area (marked in red):



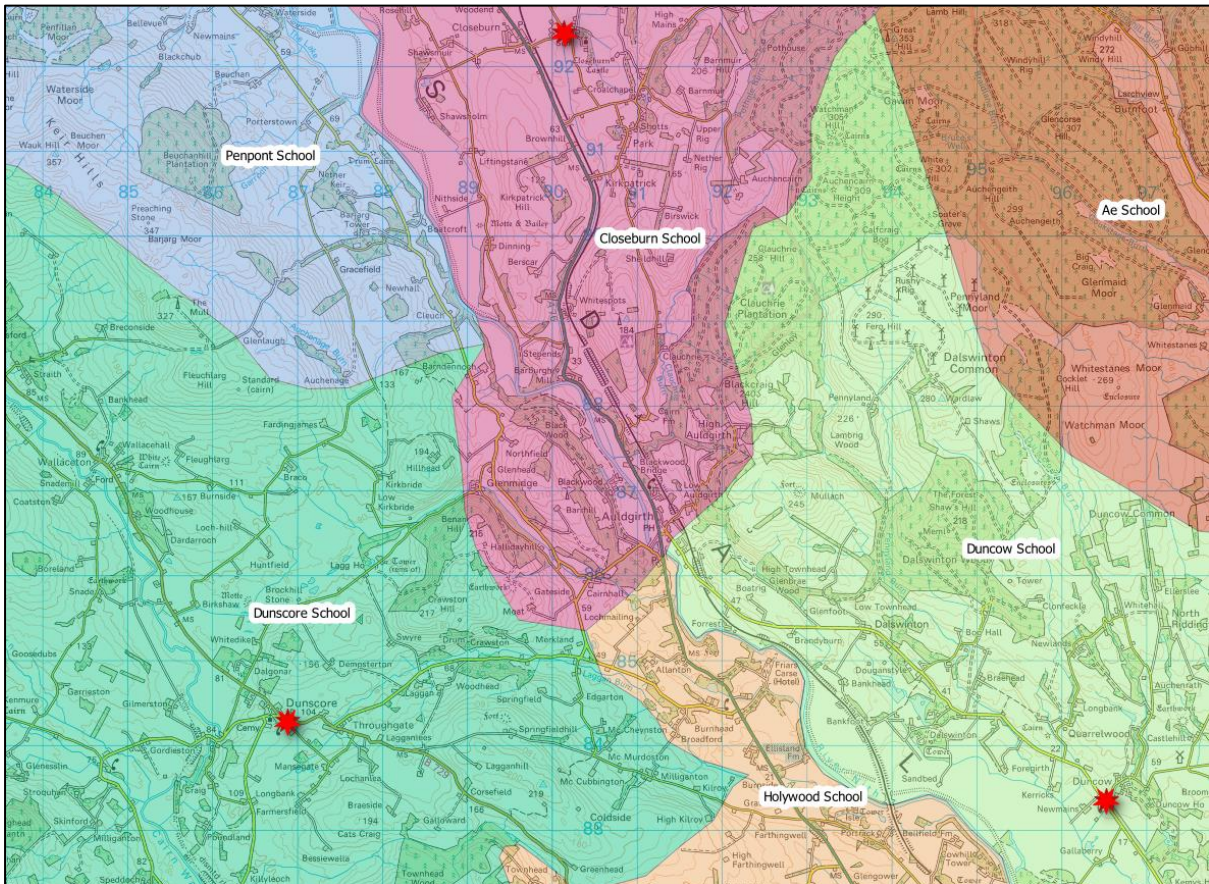
The Burnhead area (highlighted in red) in relation to the surrounding Primary School Catchment Areas

Appendix 3 – Proximity of Schools & Transport Routes

Proximity of Local Schools

The map and table below show the approximate distances to the neighbouring Wallace Hall catchment primary schools (marked in red on the map) from the Burnhead area.

These were devised using an average of the distances from all postcodes for properties where a current primary pupil resides within the Burnhead area (and nursery aged children who will attend primary in the next two years) to the postcodes for each of the individual primary schools.



Map of locations of local primary schools

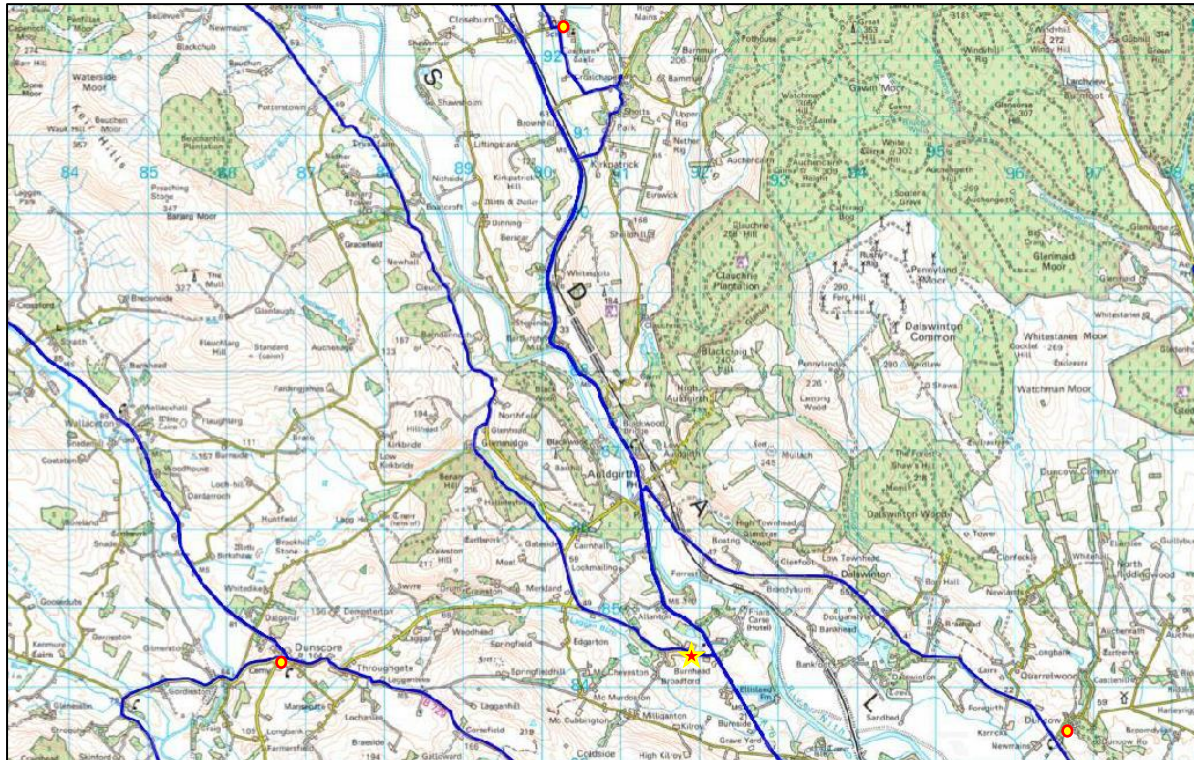
School	Approximate Distance for Burnhead Pupils in Miles
Closeburn Primary School	5.9
Duncow Primary School	5.7
Hollywood Primary School	4
Dunscore Primary School	3.6

This data shows that the closest school (on average) for the pupils currently living in the Burnhead area is Dunscore Primary School.

Currently, primary aged pupils are entitled to transport to Holywood Primary School from the Burnhead area using a taxi service. This taxi service would be altered to take those pupils to Dunscore Primary school instead if required.

Local Transport Routes

The map below shows the current service bus routes that serve the Burnhead area in blue:

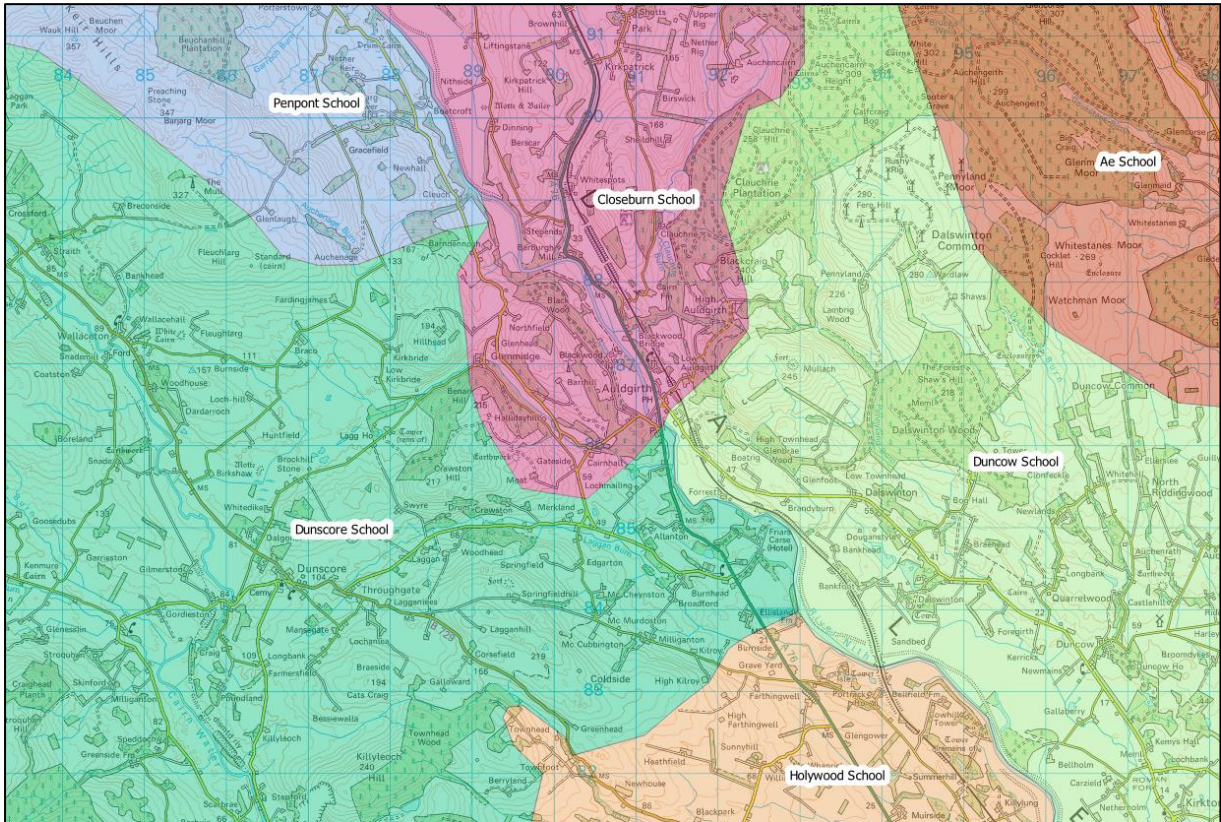


Map of local service bus routes

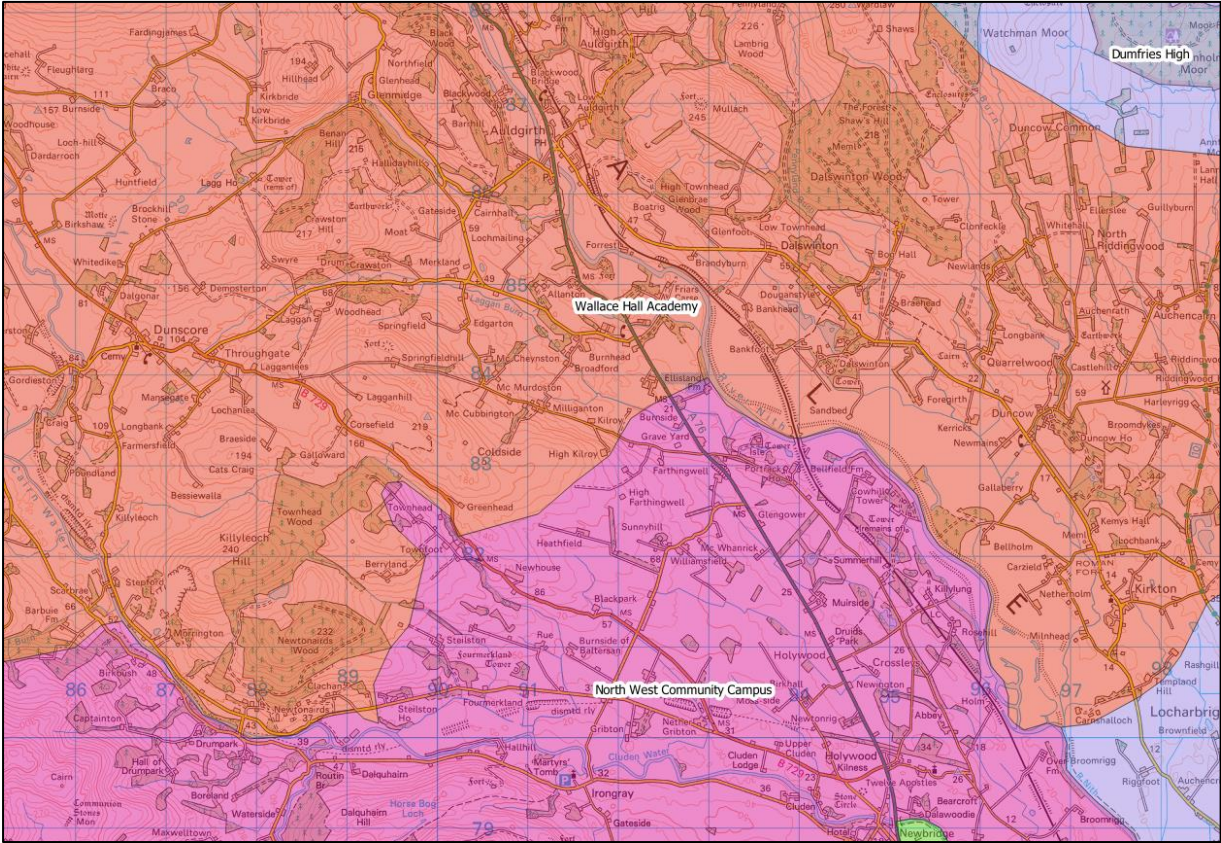
There is a service bus that goes straight through the Burnhead area and would provide free transport to secondary aged pupils who would be attending Wallace Hall Academy.

Appendix 4 – Proposed New Primary and Secondary Catchment Boundaries

If the proposal were to be agreed and implemented, the primary and secondary school catchments would be realigned as shown below:



Proposed new Primary Catchment Boundaries



Proposed new Secondary Catchment Boundaries

Appendix 5 - Proposed Dates for Implementation

Key Dates

The anticipated timescale and key dates for the implementation of this proposal are set out in the following table:

Consultation Period	Monday 5 th September to Friday 4 th November 2022
Public Meeting	Tuesday the 27 th September 2022
HMle considers proposal	Monday 21 st November to Friday 9 th December 2022
Consultation Report published	Thursday 5 th January 2023
Period for further consideration	Monday 9 th January to Friday 27 th January 2023
Council Decision	By March 2023
Implementation date	Tuesday 22 nd August 2023

END OF PROPOSAL PAPER